

Chehalis, WA 98532

[shaehanson83@gmail.com](mailto:shaehanson83@gmail.com)

253.732.5364

Authorized to work in the US for any employer



**Shae Hanson**

**Tooling & Design Engineer**

# What I will contribute...

I bring with me over 13 years of Manufacturing, Tooling/Design Engineering, CNC Programming/Machining and Operations Management experience. With contagious energy and ambition I welcome new challenges with open arms. Taking great pride in all of my work, I focus on quality, accuracy, minimizing manufacturing costs and strive to exceed customer expectations.

Throughout my career I have been without a doubt fortunate to have worked with many extremely talented individuals scattered throughout the country. Some of them mentors that have motivated, educated and supported me unconditionally. I am thankful for all of them. Together we have designed, engineered, developed and manufactured countless products for numerous customers in multiple industries. Industries such as: Automotive, Marine, Aerospace, Transportation, Entertainment, Heavy Equipment and Construction. Having the exposure and opportunities to work with such a diverse customer base has given me the required skills and knowledge to provide quality, functional and cost effective products for customers around the globe.

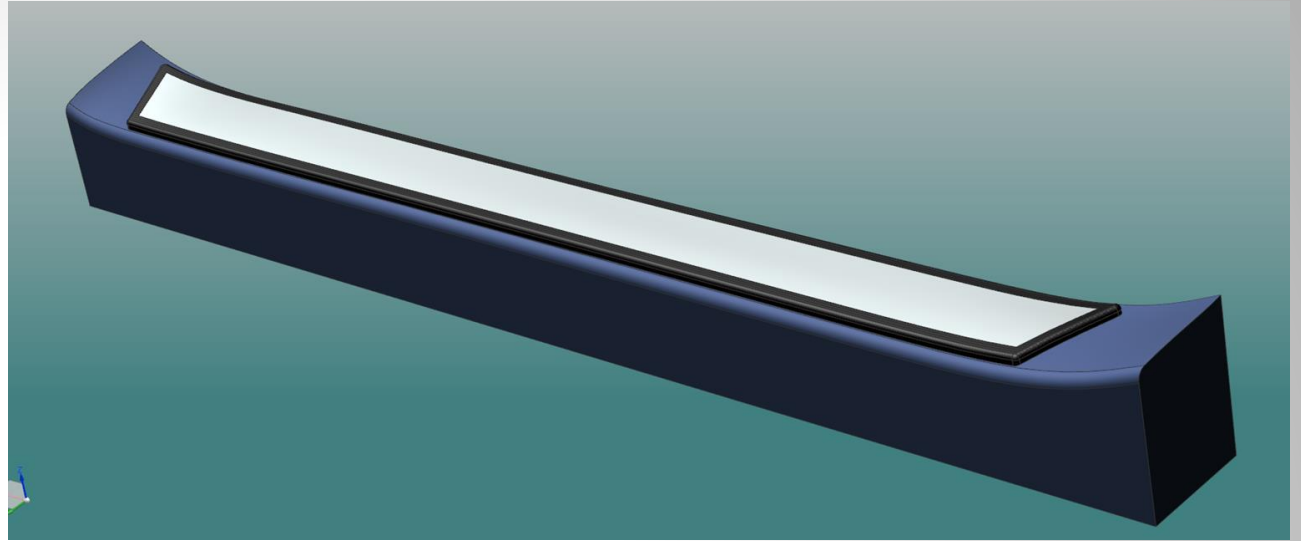
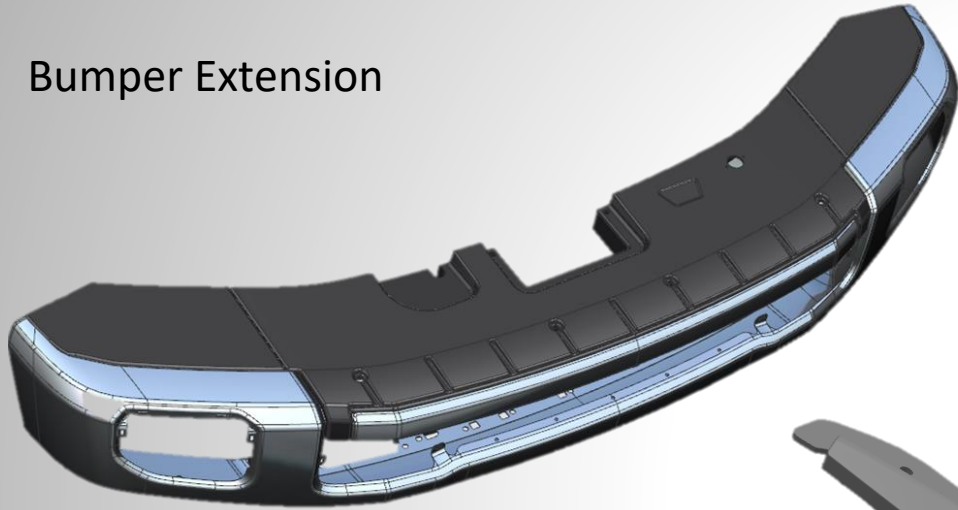
Below I have compiled examples of completed projects to highlight my experience, ability and contributions over the years.

## Advanced Skills

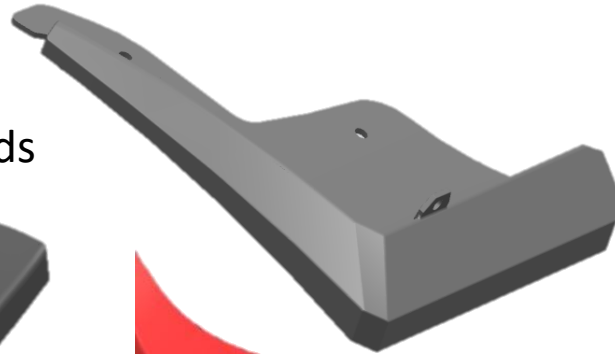
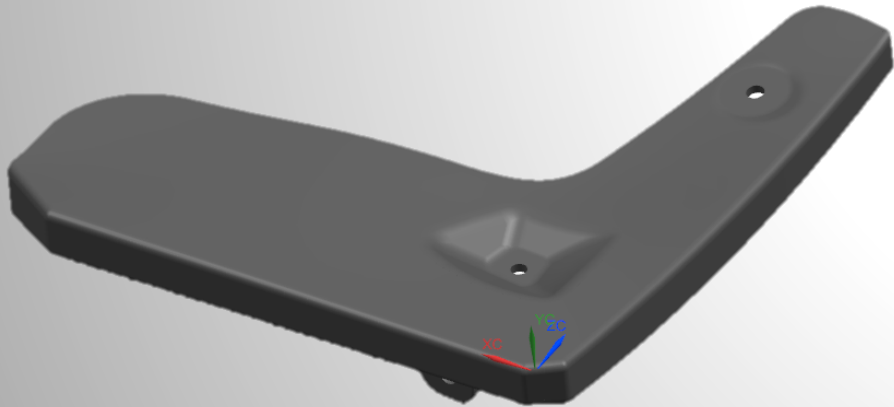
- Proficient Siemens NX User
- 3D Modeling & Design
- CNC Programming
- Manufacturing Best Practice
- CMM Programming
- Cost Reduction & Avoidance
- Safety Standards & Compliance
- Workflow Planning
- Resource Allocation
- Change & Turnaround Management
- Preventative/Reparative Maintenance
- Team Development & Leadership
- Operations Analysis / Process Redesign
- Problem Resolution
- Production Management

# Automotive Accessories

Bumper Extension



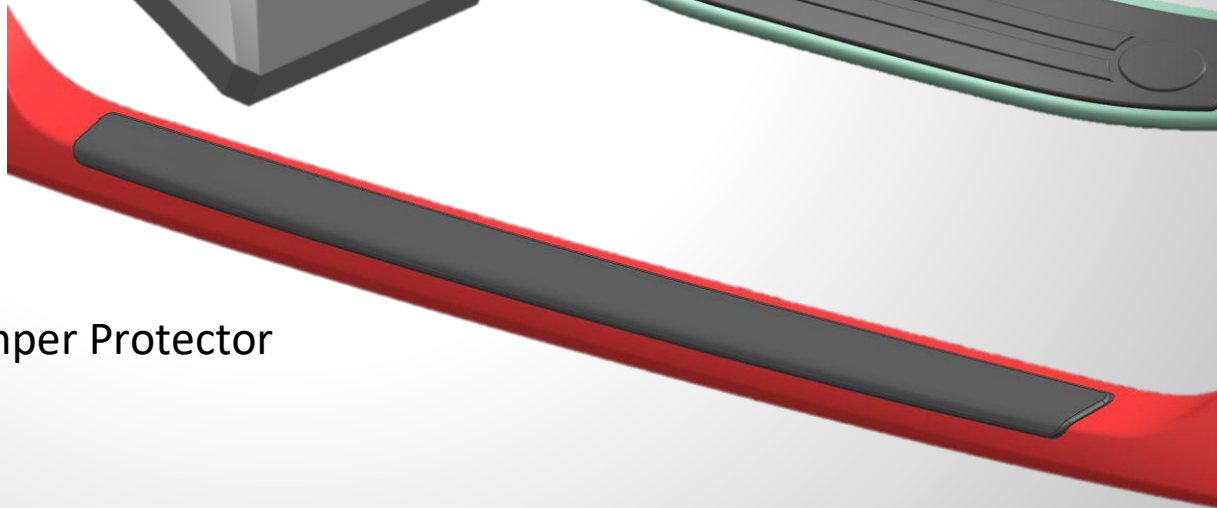
Splash Guards



Door Sill Covers



Bumper Protector



# Public Safety

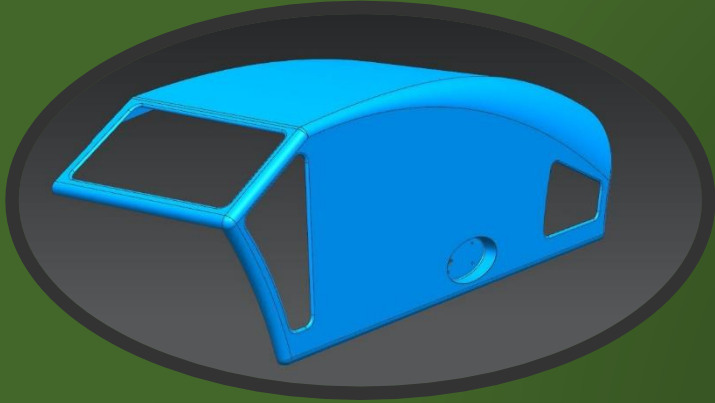
Rear Seating for Law  
Enforcement Vehicles



Correctional Facility  
Equipment



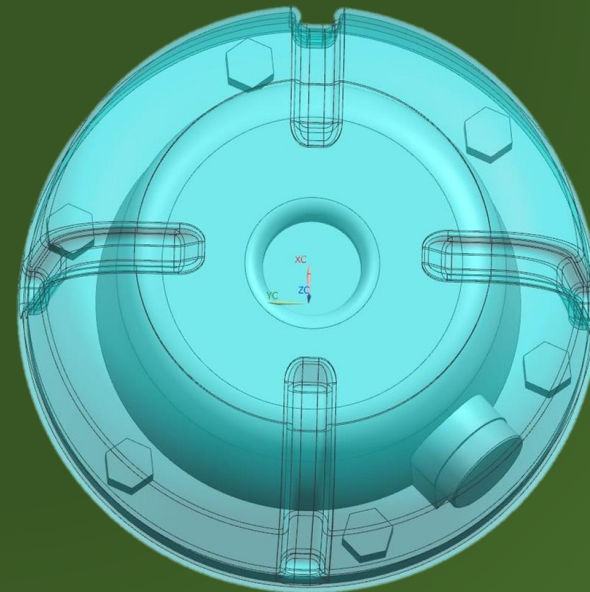
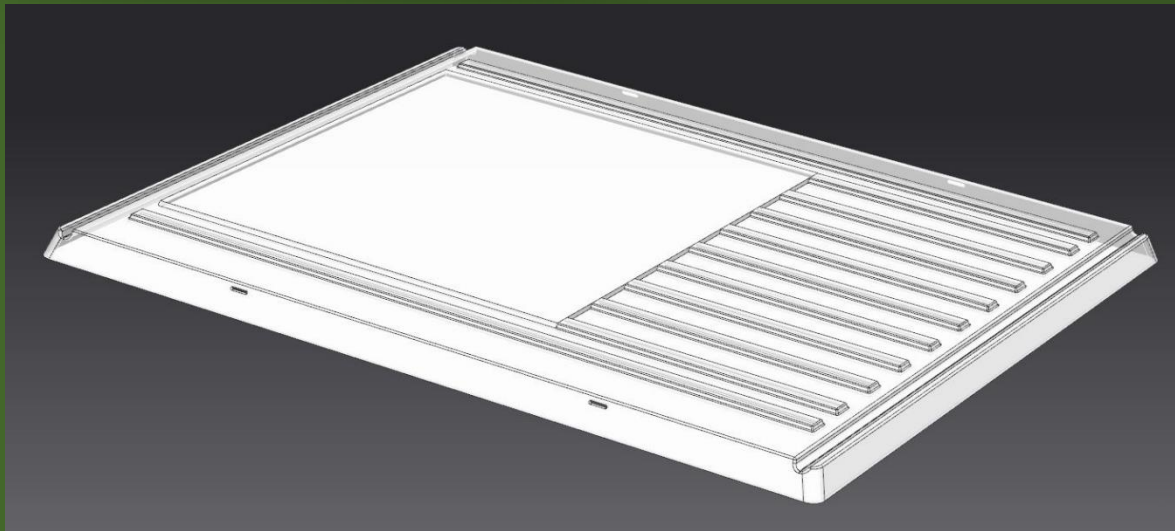
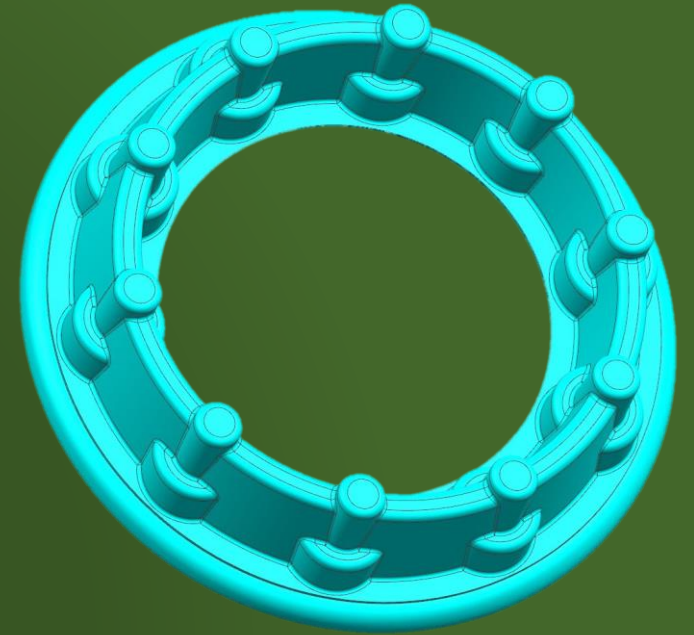
# Construction & Heavy Equipment



Generator Cover



Forklift Accessories



Protective Guards

# Machining/Tooling/Fixture

S



Custom Trim Fixtures

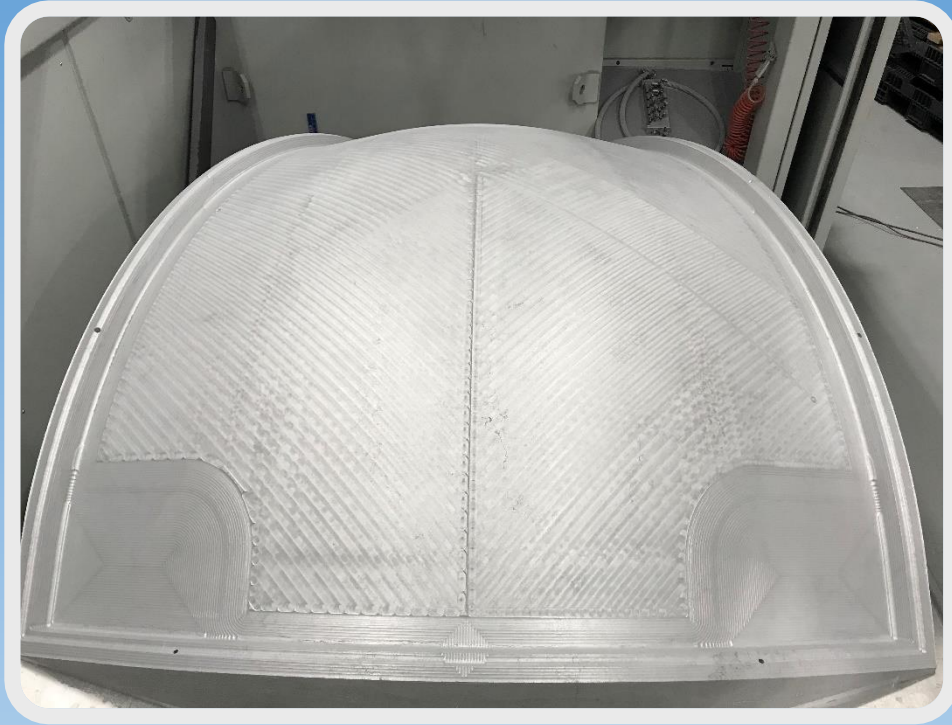


Machined from 6061  
Aluminum



Molds/Tooling





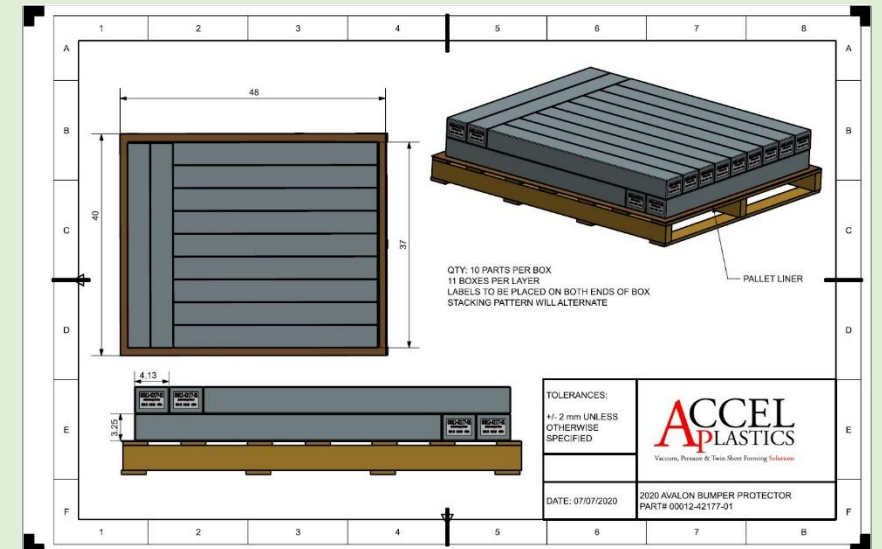
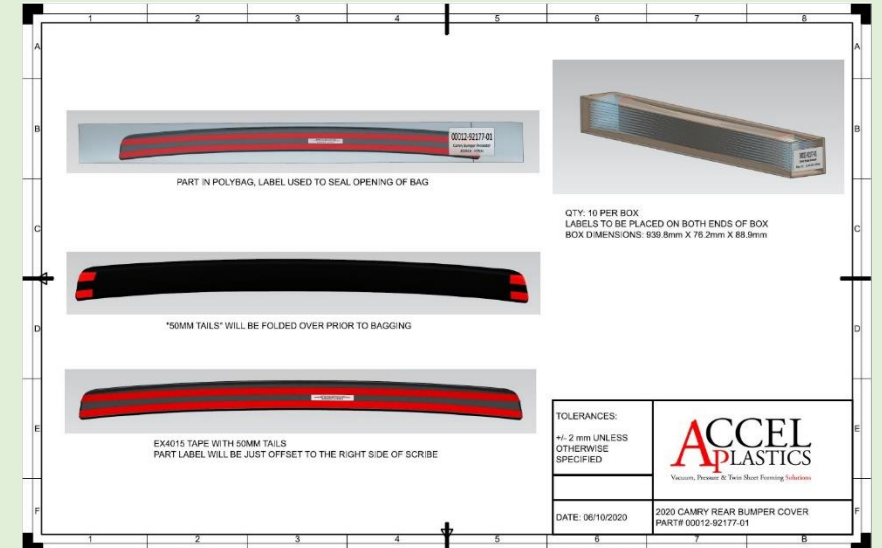
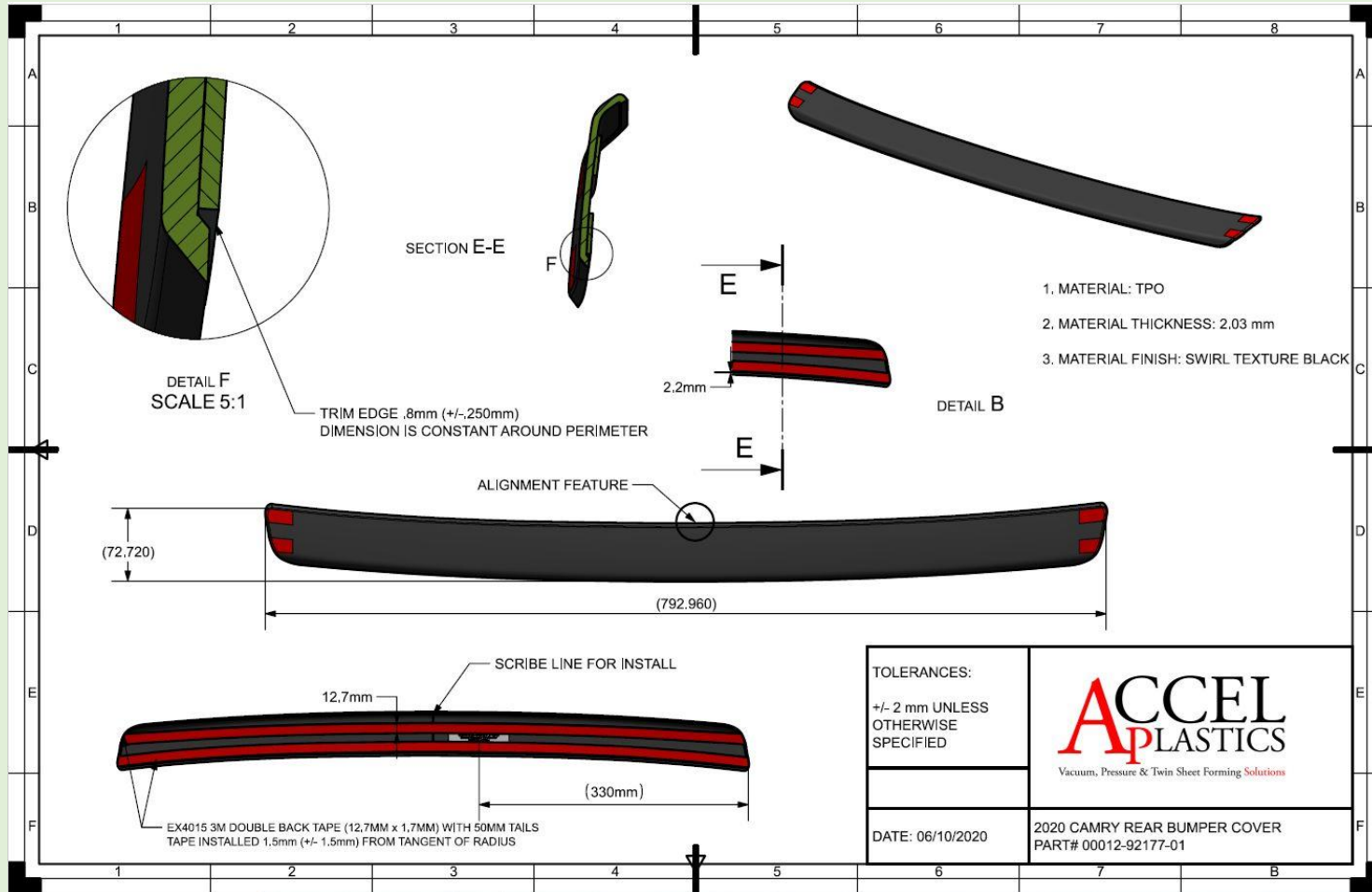
Large Scale Tooling

## Machining of Composite Materials

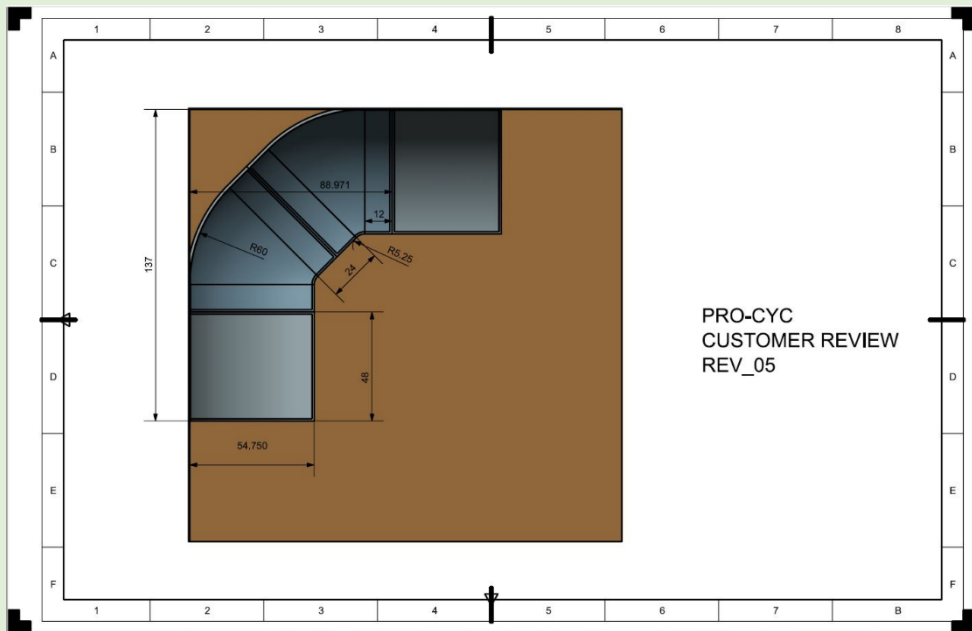
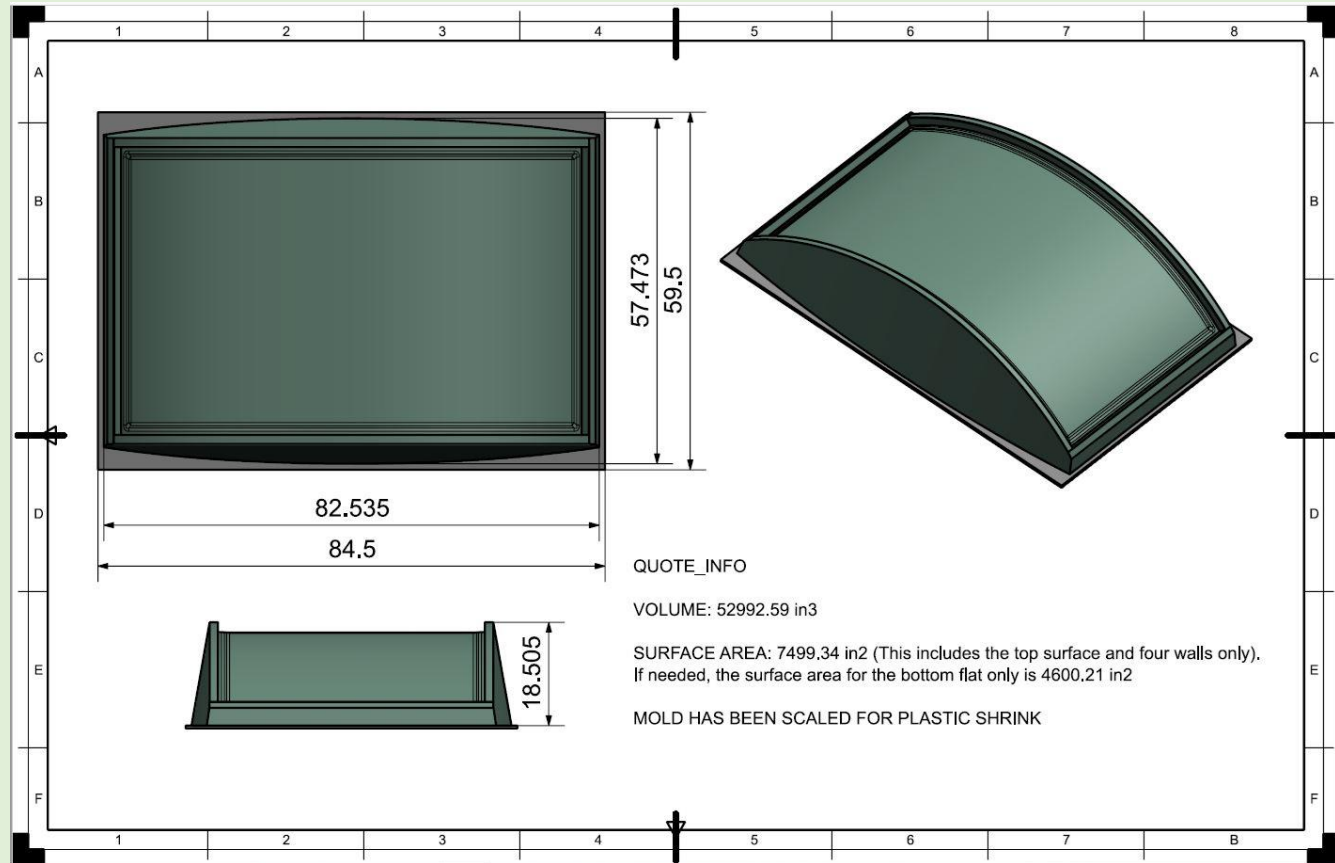
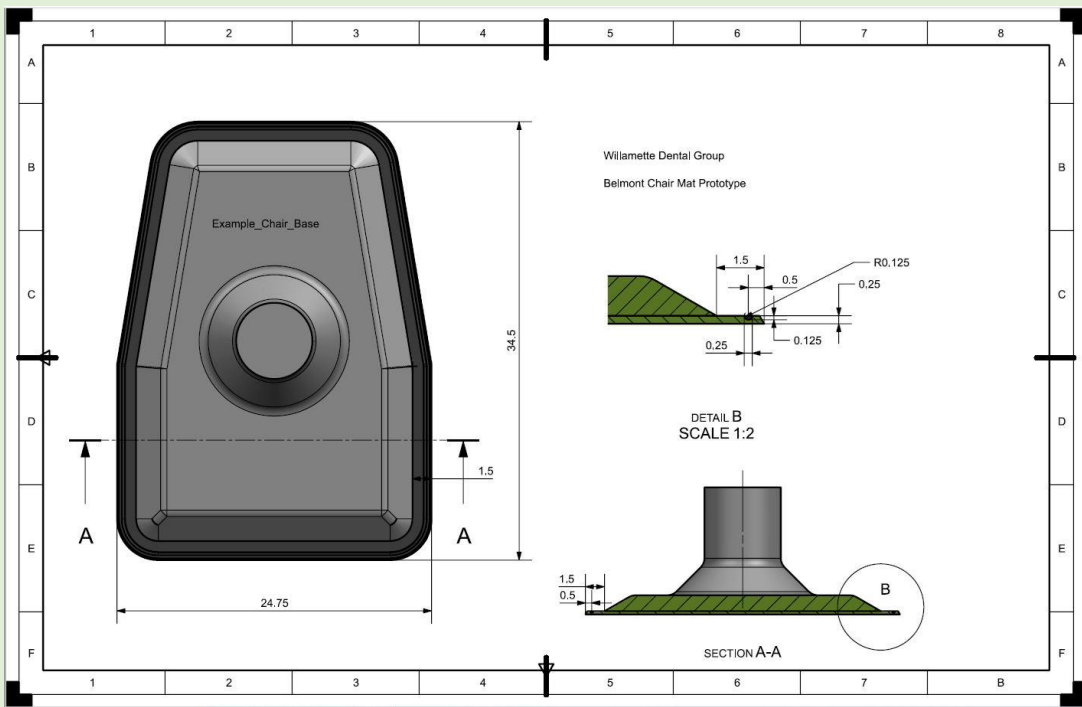
Multi Cavity Tools

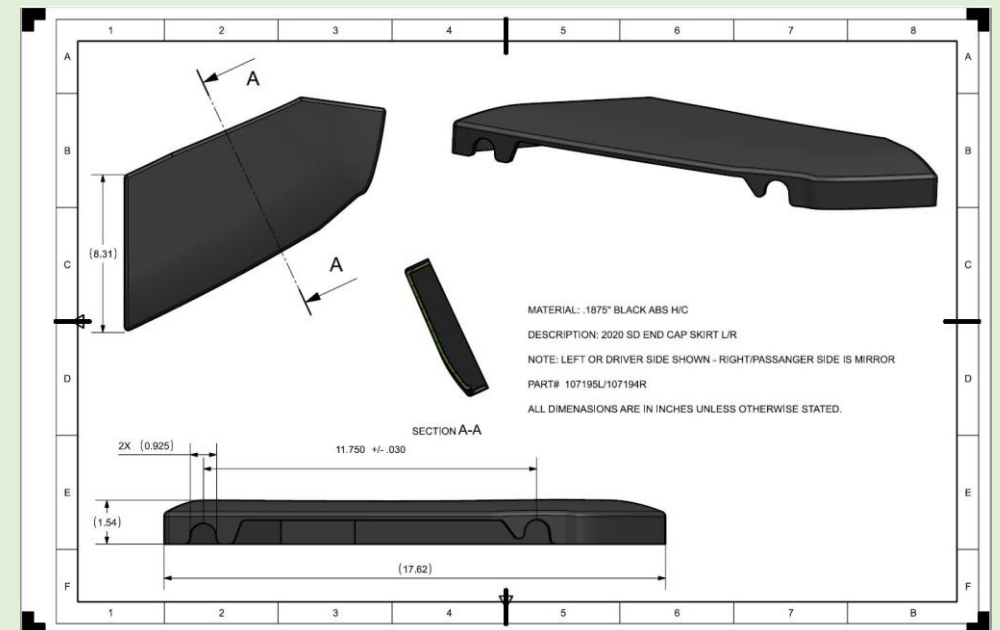
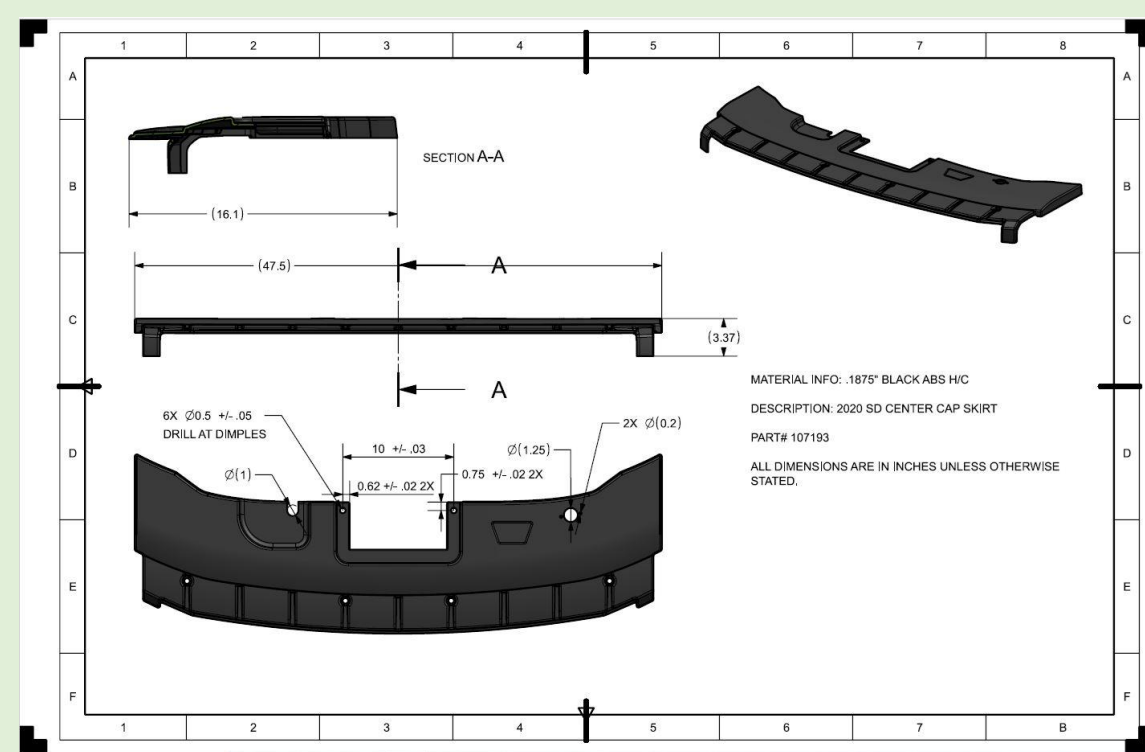
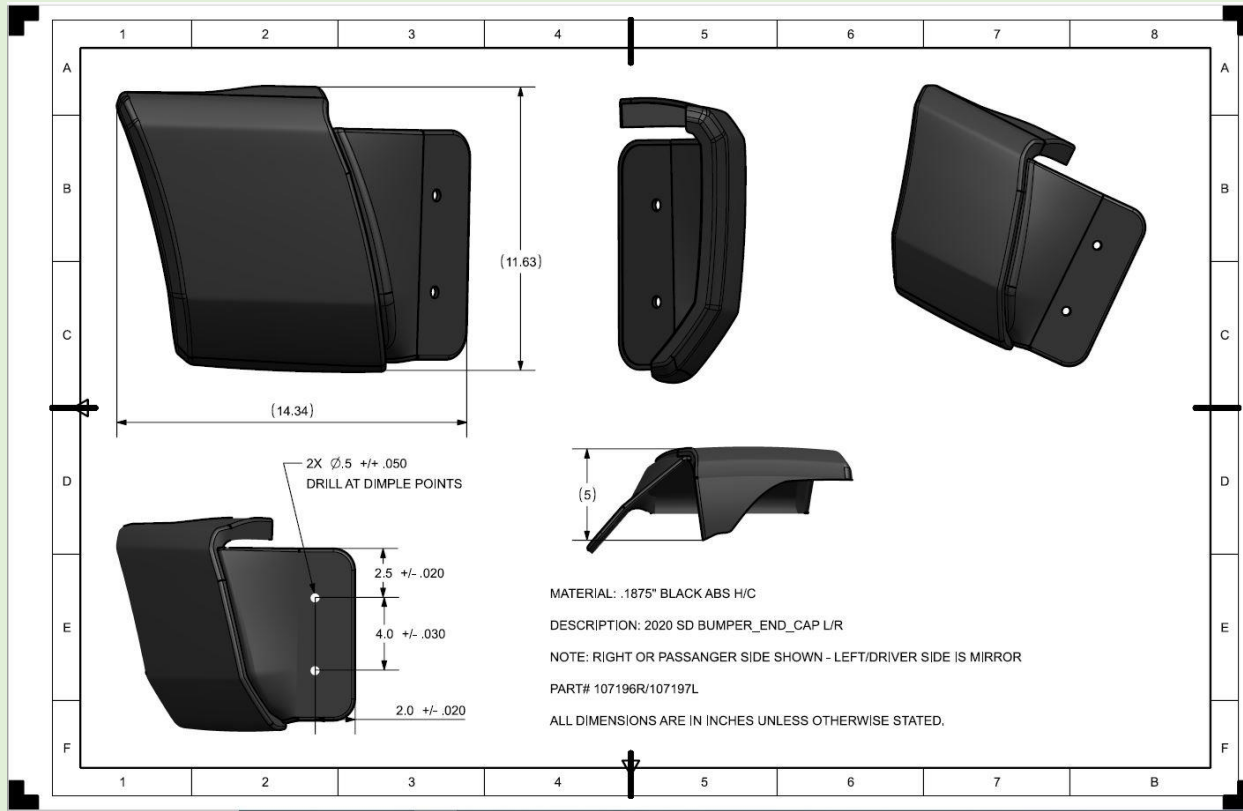


# Support Documents & Drawings









## **PROFESSIONAL EXPERIENCE**

ACCEL PLASTICS – WOODLAND, WA

### **Tooling/Design Engineer** (Oct 2016 to Present)

Coordinate and manage all Tooling, Design and Engineering responsibilities within the organization.

#### ***Selected Contributions:***

- ◆ Project management, new product design, reverse engineering, tooling design, fixture design and CNC programming.
- ◆ Accountable for forecasting all labor and materials costs.
- ◆ Expanding and developing best practice procedures to enhance production proficiencies.
- ◆ Managed setup and install of two CMS Ares 5- axis Router.

MARINE CONCEPTS / DESIGN CONCEPTS -SARASOTA, FL

### **Mill Production Manager** (2011 to Aug 2016)

Orchestrate fast-paced, complex operations to facilitate maximum operations within the mill. Develop and implement measures to maximize inventory control, ensure continuous professional development for personnel, and minimize maintenance processes/operational down time.

#### ***Selected Contributions:***

- ◆ Received promotion to the managerial distinction in recognition of exceptional capabilities.
- ◆ Successfully increased labor efficiencies by 15% per hour.
- ◆ Recruit, interview, onboard, and train high caliber professionals.
- ◆ Hold full accountability for forecasting all labor and materials costs.
- ◆ Utilize best practices methodologies to improve plant efficiency.

### **Mill / Pre-Mill Production Supervisor** (2007 to 2011)

Oversaw and managed production operations to yield maximum output without sacrificing on quality.

#### ***Selected Contributions:***

- ◆ Developed and implemented comprehensive preventative/reparative maintenance plans to ensure minimal operational downtime.
- ◆ Launched a wide array of training programs on technical skills and company policies/procedures.
- ◆ Fostered and cultivated collaborative lines of communication between Engineering and Production departments maximize inventory and mill operations.

# **Personal References**

**Matt Chambers** – Former President of Marine Concepts/Design Concepts (2006-2017)

Years of Relationship: 14

Contact Number: (239) 243-4650

**Steve Lee** – Project Manager at Accel Plastics

Years of Relationship: 4

Contact Number: (253) 495-8981

**Nicole Hanks** – Purchasing Manager at Accel Plastics

Years of Relationship: 4

Contact Number: (253) 797-4641